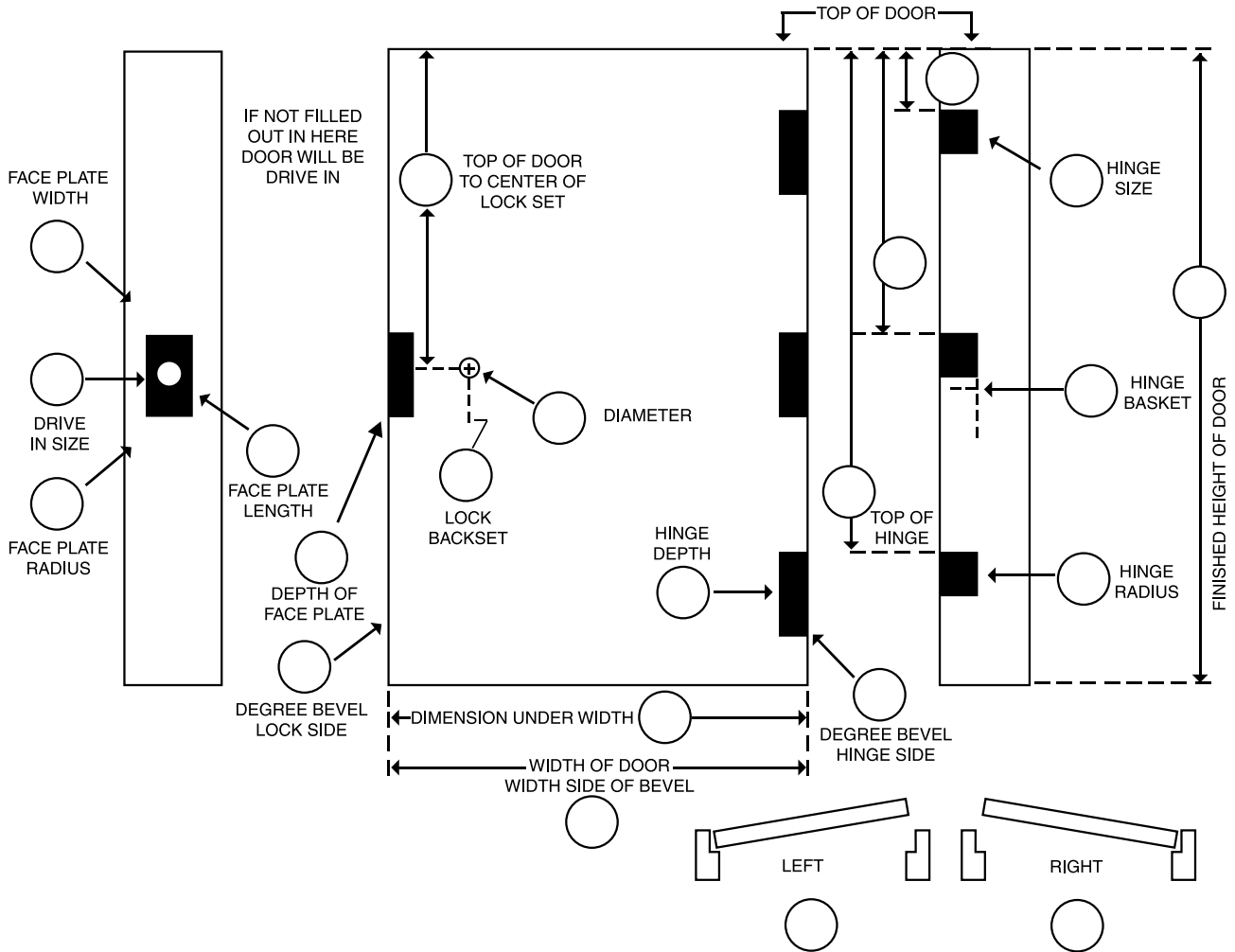


# MACHINING SPECIFICATIONS FOR NON-STANDARD DOORS



TOTAL DOORS	WIDTH	LENGTH	LITES	LEFT HAND	RIGHT HAND	DESCRIPTION

P.O. #: \_\_\_\_\_  
 DATE: \_\_\_\_\_  
 REQUIRED: \_\_\_\_\_  
 COMPANY: \_\_\_\_\_  
 TEMPLATE #: \_\_\_\_\_  
 SIGNED: \_\_\_\_\_

\* NOTE: Machining Specs must be filled out and signed with each order, where doors are machined

Sorry, these items are only available at our Clareview Clearance Centre.

## Windsor Plywood

We apologize if this fax was received in error or at an inconvenient time. Please call us if this is the case.

**EDMONTON - CLAREVIEW • 5255 - 128th AVE. • TEL: 478-WOOD • FAX: 478-9064**

**TOLL FREE: 1-888-898-4999 • www.windsor-edmonton.com**

**STORE HOURS: MON - FRI: 8:00AM - 8:00 • SAT: 8:00 - 5:00PM • SUN: 10:00AM - 4:00PM • OPEN HOLIDAY MONDAY 10:00AM - 4:00PM**